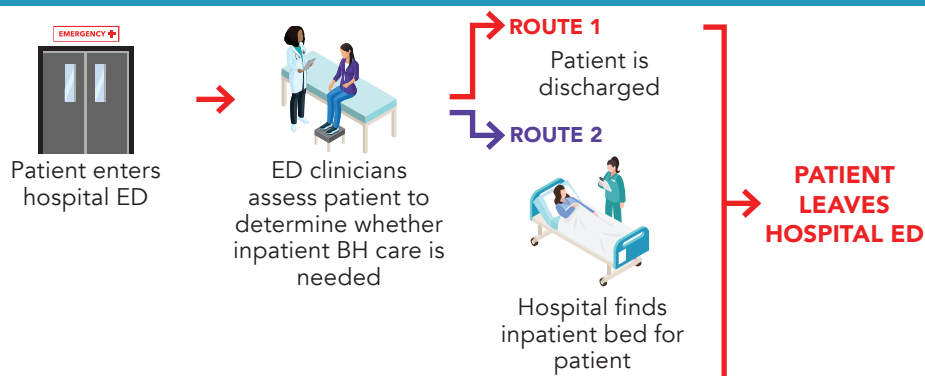


Emergency Department Boarding for Behavioral Health Patients

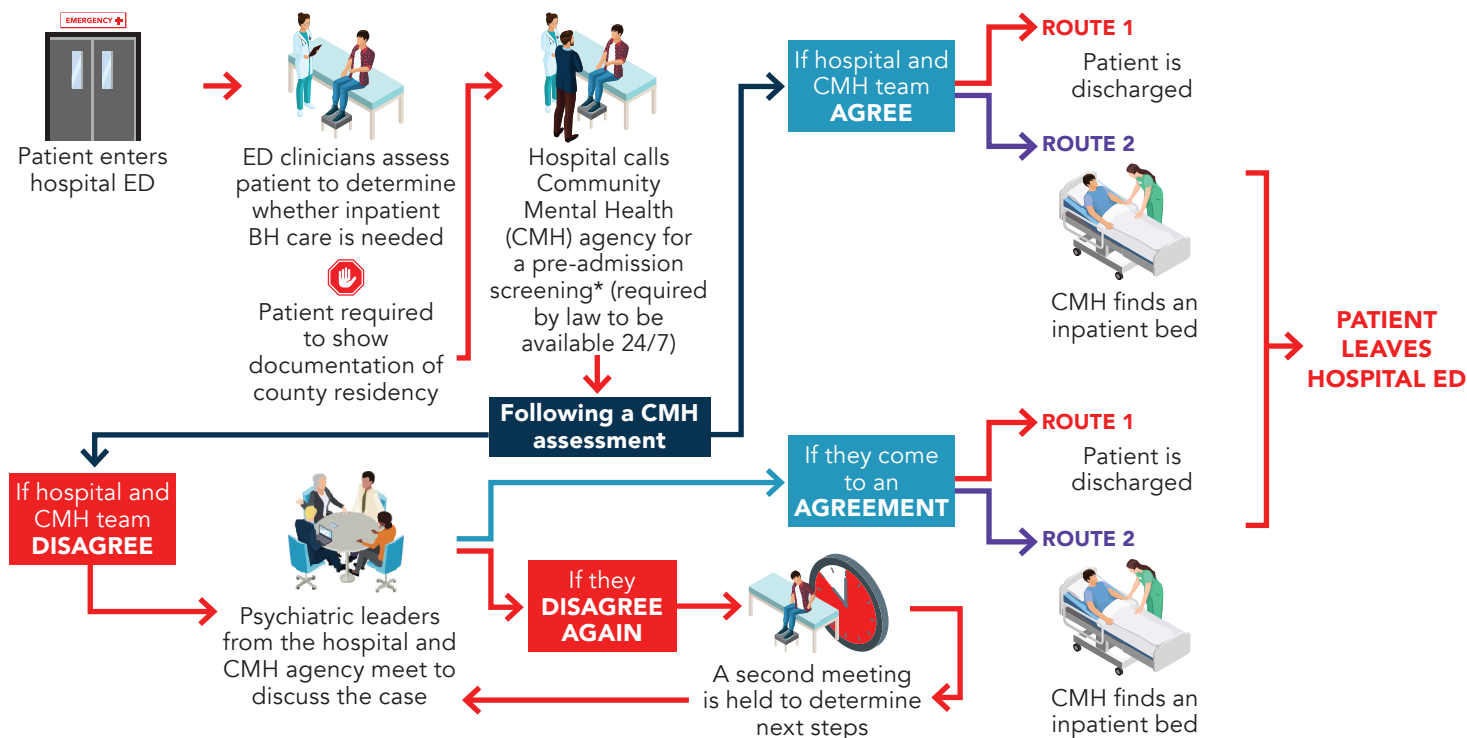
Michigan hospitals care for **more than 150** behavioral health (BH) patients every day waiting in emergency departments (EDs) due to a lack of available inpatient psychiatric beds across the state. **The steps taken to get a behavioral health patient care varies based on whether or not the individual is commercially insured or covered by Medicaid.** Currently, **one of every three patients with Medicaid will spend more than 48 hours waiting in the ED.** For a Medicaid patient, there are a series of hurdles which can take several hours – if not days – to overcome before the individual is placed in an inpatient bed. In addition to the mental and physical toll this takes on the patient, hospitals are spending significant resources to provide care until placement. This reduces their capacity to care for other patients needing emergency services and puts unnecessary pressure on staff and facility resources – at times with no opportunity for reimbursement.

THE CURRENT FLOW OF CARE

PATIENTS WITH COMMERCIAL INSURANCE



PATIENTS WITH MEDICAID INSURANCE



*Screening process/timing varies based on CMH.

Emergency Department Boarding for Behavioral Health Patients

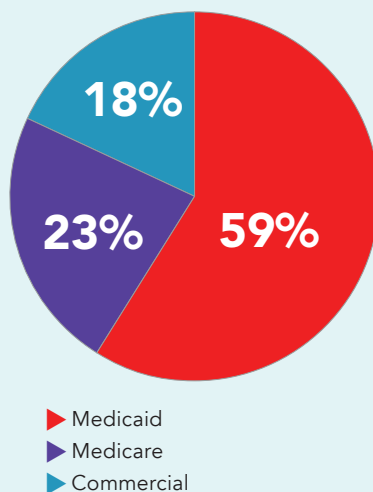
THE ED BOARDING EXPERIENCE



“ It is very difficult for us to find appropriate placement in an inpatient child/adolescent psychiatric unit for a pediatric patient with complex needs. **Children and their parents can wait in our busy emergency department for days**, sitting in a small room together, hoping the system will come through. Some become so tired of waiting, they take their children home without receiving the level of care they need. This situation leaves me and my emergency department staff frustrated and worried for patients who aren't receiving medically necessary care. ”

155 patients every day, including **17 children**, are sitting in a Michigan ED waiting for appropriate healthcare services.

ED BOARDERS BY PAYOR



Patients with Medicaid coverage are waiting in the ED for psychiatric placement **2x longer** than those who are commercially insured.

Solution

Expanding the three-hour assessment responsibility would allow clinically qualified staff to conduct pre-admission screenings that will improve the delivery of care for behavioral health patients in Michigan hospital EDs.

Implementing this change will expand the number of available healthcare personnel available to conduct assessments in the first three hours of a patient presenting in an ED. It also allows Medicaid patients to be assessed in a similar manner as patients with commercial coverage. Ultimately, it will enable hospitals to effectively assess and triage patients requiring high acuity behavioral health services and restore ED capacity for all medical needs.



MHA

Michigan Health &
Hospital Association

www.mha.org

